

NOTES

LEGEND

5	PORTABLES 2005	06/16/05
4	SEPTEMBER 2002 PORTABLES	06/01/03
3	PORTABLES 2000	06/28/00
2	UPDATED	04/22/99
1	MET	01/30/98
NO.	REVISIONS	DATE

SIMCOE MUSKOKA CATHOLIC DISTRICT SCHOOL BOARD

46 ALLIANCE BLVD.
BARRIE, ONTARIO
L4M 5K3
(705) 722-3555

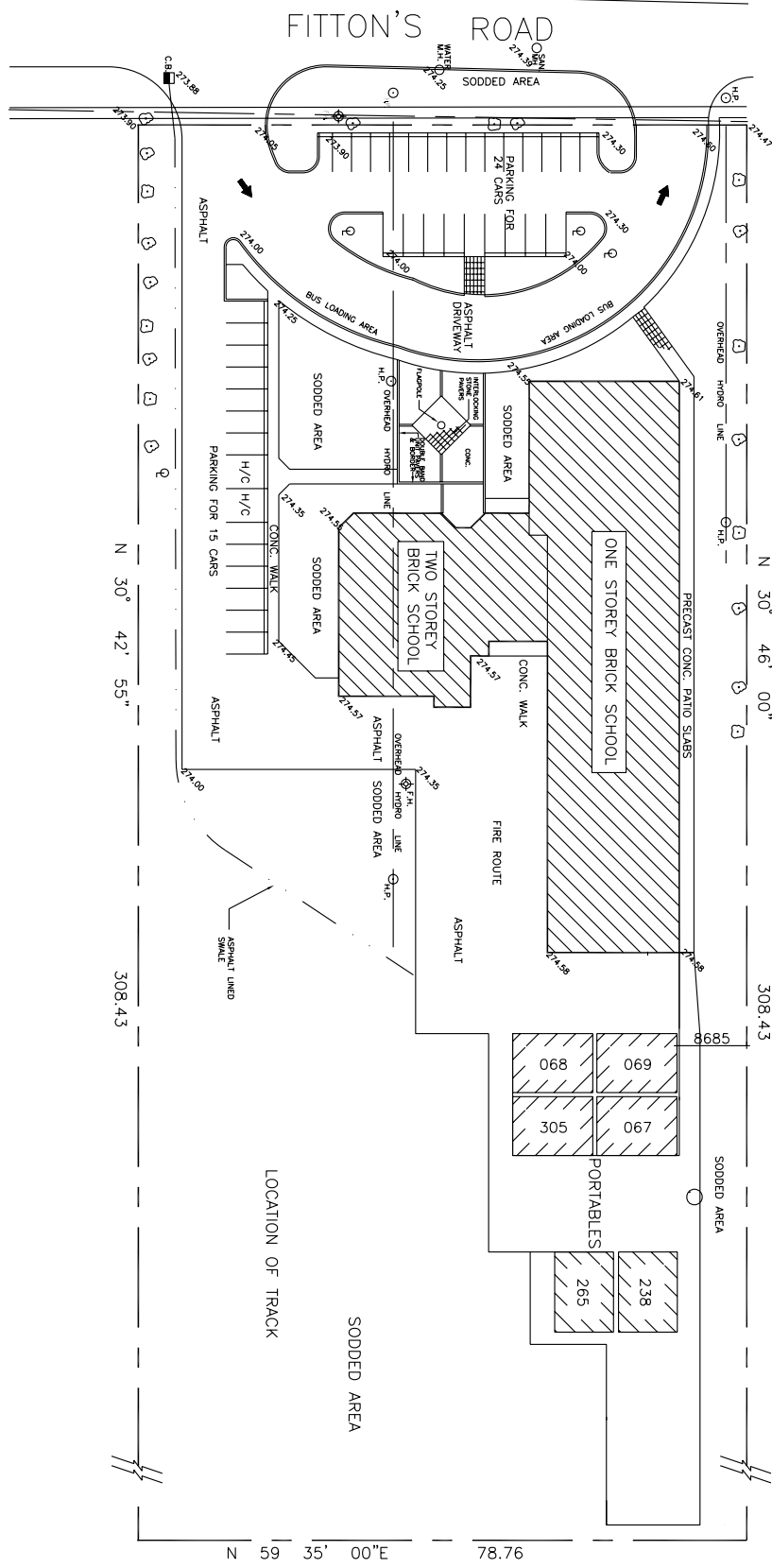
SCHOOL:
MONSIGNOR LEE

14 FITTON'S ROAD EAST
ORILLIA, ONTARIO
L3V 2H9

DRAWING:
SITE PLAN

DWG NO.:
MLESKSP

SCALE: N T S
SHEET 1 OF 1
DRWN BY: SW DATE: 01/21/98



FITTON'S ROAD

N 30° 46' 00"

308.43

N 59° 35' 00" E 78.76

LOCATION OF TRACK

SODDED AREA

PORTABLES

265 238

068 069
305 067

FIRE ROUTE

ASPHALT

CONC. WALK

ASPHALT DRIVEWAY

ASPHALT

CONC. WALK

ASPHALT

CONC. WALK

ASPHALT

CONC. WALK

ASPHALT

CONC. WALK

ASPHALT

CONC. WALK

ASPHALT

CONC. WALK

ASPHALT

CONC. WALK

ASPHALT

CONC. WALK

ASPHALT

CONC. WALK

ASPHALT

CONC. WALK

ASPHALT

PARKING FOR 15 CARS

H/C H/C

PARKING FOR 24 CARS

ASPHALT DRIVEWAY

ASPHALT

ASPHALT

ASPHALT

ASPHALT

ASPHALT

ASPHALT

ASPHALT

ASPHALT

ASPHALT

ASPHALT

ASPHALT

ASPHALT

ASPHALT

ASPHALT

ASPHALT

ASPHALT

ASPHALT

ASPHALT

ASPHALT

ASPHALT

ASPHALT

ASPHALT

ASPHALT

ASPHALT

ASPHALT

ASPHALT

ASPHALT

ASPHALT

ASPHALT

ASPHALT

ASPHALT

ASPHALT

ASPHALT

ASPHALT

ASPHALT

ASPHALT

ASPHALT

ASPHALT

ASPHALT

ASPHALT

ASPHALT

ASPHALT

ASPHALT

ASPHALT

ASPHALT